



# NORO

KNITTING MAGAZINE **Lace Maxi Dress**



# 3 Lace Maxi Dress

●●●○ INTERMEDIATE



## Finished Measurements

- Bust 38 (41, 50)"/96.5 (104, 127)cm
- Length 47 (47¾, 49½)"/119 (121, 125.5)cm
- Upper arm 12¼ (13½, 16)"/31 (34.5, 40.5)cm

## Materials

- 7 (8, 10) balls of Noro *Silk Garden Lite* in #2072
- One pair size 10 (6mm) needles OR SIZE TO OBTAIN GAUGE
- Size 9 (5.5mm) circular needle, 24"/60cm long
- One extra size 10½ (6.5mm) needle for casting on only
- One decorative 2" (5mm) button or brooch (optional)
- Stitch markers

## Gauge

15 sts and 17 rows = 4"/10cm over chart pat after blocking.  
TAKE TIME TO CHECK GAUGE.

## Back

With size 10½ (6.5mm) needle, cast on 72 (78, 94) sts. Change to size 10 (6mm) needles.

Row 1 (WS) Knit. Row 2 Purl.

Row 3 P2 (3, 4), \*yo, p2tog, p3; rep from \* to end.

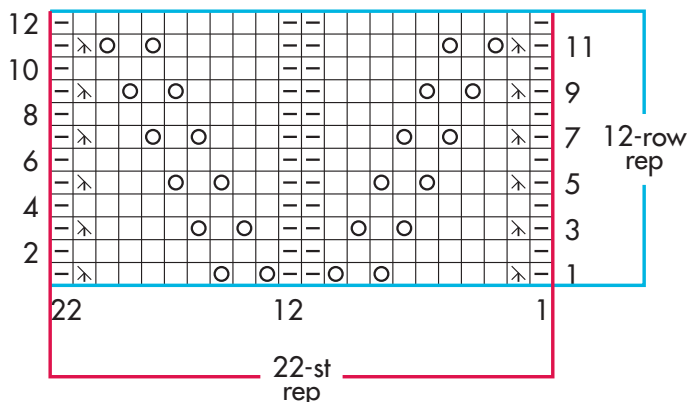
Row 4 (RS) Knit. Row 5 Knit. Row 6 Purl. Row 7 Purl.

## Beg chart pat

Row 1 (RS) K3 (6, 3), beg with st 1 (1, 12) of row 1 of chart, work to st 22, then work 22-st rep 2 (2, 3) times, work sts 1–11 for 0 (0, 1) time, k3 (6, 3).

Row 2 (WS) P3 (6, 3), [k1, p9, k1] 6 (6, 8) times, p3 (6, 3).

Cont to foll chart in this way, working the first and last 3 (6, 3) sts in St st (k on RS, p on WS), until the 12-row chart rep has been worked 5 times.



## Stitch Key

- |  |                  |  |      |
|--|------------------|--|------|
|  | k on RS, p on WS |  | yo   |
|  | p on RS, k on WS |  | SK2P |

## Ridge eyelet inset

Row 1 (RS) Purl.

Row 2 Knit.

Row 3 K2 (3, 4), \*yo, k2tog, k3; rep from \* to end.

Row 4 Purl.

Row 5 Purl.

Row 6 Knit. Resume chart pat, work 12-row chart rep 3 times.

Next 6 rows Work rows 1–6 of ridge eyelet inset.

Resume chart pat, work 12-row chart rep twice.

Next 6 rows Work rows 1–6 of ridge eyelet inset.

Resume chart pat, work 12-row chart rep once.

Work rows 1 and 2 of ridge eyelet inset. Piece measures approx 35½"/90cm from beg. (Note that after blocking, the length will be adjusted to 37"/94cm).

## Raglan armhole shaping

Note Read before cont to knit.

Cont to work ridge eyelet pat through row 6, then work 12-row chart rep once, work rows 1–6 of ridge eyelet inset once more, then rep rows 3–6 to end, AT SAME TIME, shape armhole as foll:

Bind off 3 sts at beg of next 2 rows.

Dec row 1 (RS) K1, p1, SKP, work to last 4 sts, k2tog, p1, k1. Rep dec row 1 every other row 14 (15, 17) times more.

Dec row 2 (RS) K1, p1, SK2P, work to last 5 sts, k3tog, p1, k1. Rep dec row 2 every other row 1 (2, 5) times more—28 sts. Work 1 row even. Sl sts to st holder.

## Front

Work same as for back.

## Sleeves

With size 10½ (6.5mm) needle, cast on 48 (52, 62) sts. Change to size 10 (6mm) needles.

Row 1 (WS) Knit.

Row 2 (RS) Purl.

Row 3 (WS) P4 (4, 2) \*yo, p2tog, p2; rep from \* to end.

Row 4 Knit.

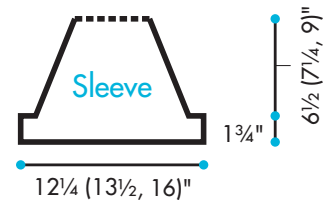
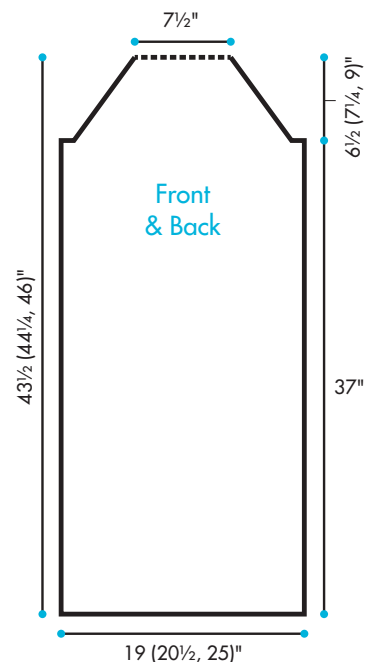
Row 5 Knit.

Row 6 Purl.

Row 7 Purl.

Next row Work row 3 once more.

On the last WS row, place markers (pm) to mark the center 44 sts.



# 3 Lace Maxi Dress



## Raglan cap shaping

**Note** Read before cont to knit.

Rep rows 4–7, then working 22-st chart rep twice over the center 44 sts (work sts outside of markers in St st), work 12-row chart rep once, then work rows 1–6 of ridge eyelet inset, then rep rows 3–6 only to end, **AT SAME TIME**, working cap shaping as foll:

Bind off 3 sts at beg of next 2 rows.

**Dec row (RS)** SKP, work to last 2 sts, k2tog. Rep dec row every other row 1 (2, 4) times more, then every 4th row 6 times, then every other row 3 (4, 7) times—20 sts rem. Work 1 WS row even and sl sts to a holder.

## Finishing

Wet block pieces to measurements straightening the seam edges and leaving the hem edge to form points as in photo. Set in sleeves, taking in one half off each st at raglan seam to form raglan detail. Sew side and sleeve seams.

## Neckband

With circular needle, k28 sts from back holder, 20 sts from sleeve, 28 sts from front holder, 20 sts from sleeve—96 sts. Join and pm for beg of rnd. P 3 rnds. Bind off loosely. Sew button to center front, if using. ■

## Abbreviations

<b>approx</b>	approximately	<b>SK2P</b>	slip 1, knit 2 stitches together, pass slip stitch over k2tog
<b>beg</b>	begin(ning)	<b>sl</b>	slip
<b>cm</b>	centimeter(s)	<b>st(s)</b>	stitch(es)
<b>cont</b>	continue(ing)	<b>St st</b>	stockinette stitch
<b>dec</b>	decrease(ing)	<b>WS</b>	wrong side(s)
<b>foll</b>	follow(s)(ing)	*	repeat directions following * as many times as indicated
<b>pm</b>	place marker	[ ]	repeat directions inside brackets as many times as indicated
<b>rep</b>	repeat		
<b>RS</b>	right side		
<b>SKP</b>	slip 1, knit 1, pass slip stitch over		

